

## Exploration Drilling to Developing Arizona Lithium's Commercial Scale Proof of Concept at Pad #1

*Chelsey J. Hillier, Chad Glemser*  
*Arizona Lithium Ltd.*

### Summary

Arizona Lithium's Prairie Project is unlocking a vast untapped lithium brine resource in the Duperow Formation in the heart of Saskatchewan's resource-rich Williston Basin. Using emerging and innovative lithium extraction technology, the project is able to utilize existing skills and infrastructure while working within a mining-friendly jurisdiction. Elevated lithium concentrations have been noted across the entirety of the project area, within a region that has historically been known for its oil and mining production.

The Prairie Project utilizes conventional oil and gas drilling and completion methods to access lithium-rich brine from aquifers ranging from 2.0 – 2.5 km underground. The brine is pumped to surface where direct lithium extraction (DLE) technology is used to separate lithium from the brine. The extracted lithium concentrate is then converted onsite to an upgraded high-purity material. The remaining lithium-depleted brine will be disposed of back underground into a different aquifer.

Exploration into the Duperow Formation on the property started in 2021, and multiple drilling & completion programs have completed to date. The first two wells were completed in 2021; the third well was completed in 2022; and six wells were completed in 2024. The development plan for the Prairie Project includes drilling production and disposal wells from a pad location with a DLE facility located at the surface of each pad. Arizona Lithium has drilled the subsurface wells required to support a commercial scale proof of concept at Pad #1 and is planning to start surface construction at Pad #1 in the spring of 2025.

This presentation will summarize the exploration drilling completed to date and the progress Arizona Lithium has made in bringing on a commercial scale proof of concept at Pad #1.

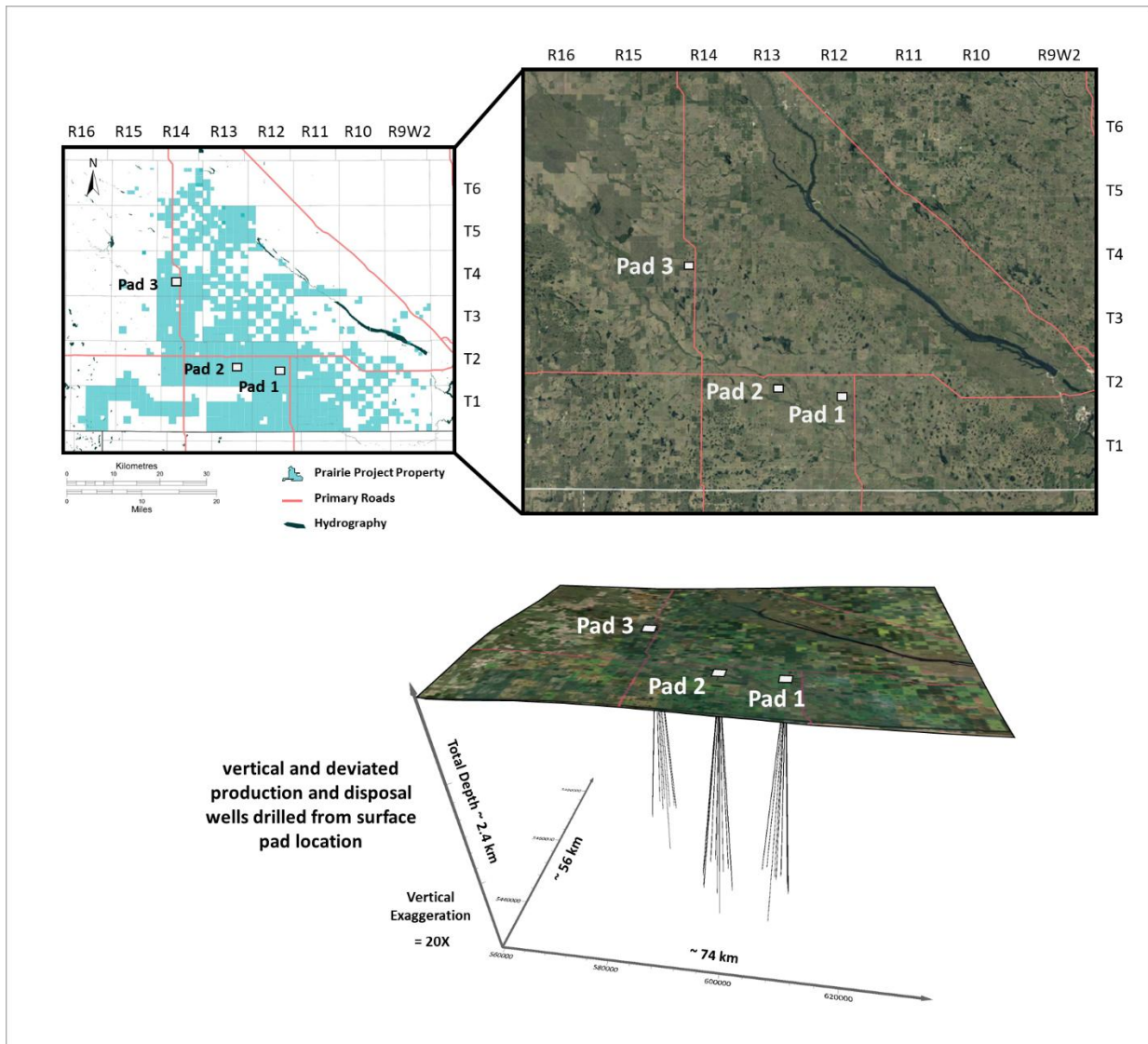


Figure 1: Pad locations of Arizona Lithium’s 2024 drilling and completion programs and rendering of the planned subsurface wells (Note: 6 subsurface wells have been drilled across the three pad locations).

## Acknowledgements

Our sincere gratitude goes out to all who are making this project a reality. We appreciate the dedication and experience of all of motivated individuals we work with to form our team. This includes all of the employees at Arizona Lithium, our consultants, our service providers, our peers in the basin and the Government of Saskatchewan. We would also like to acknowledge our shareholders who continue to support our growth.